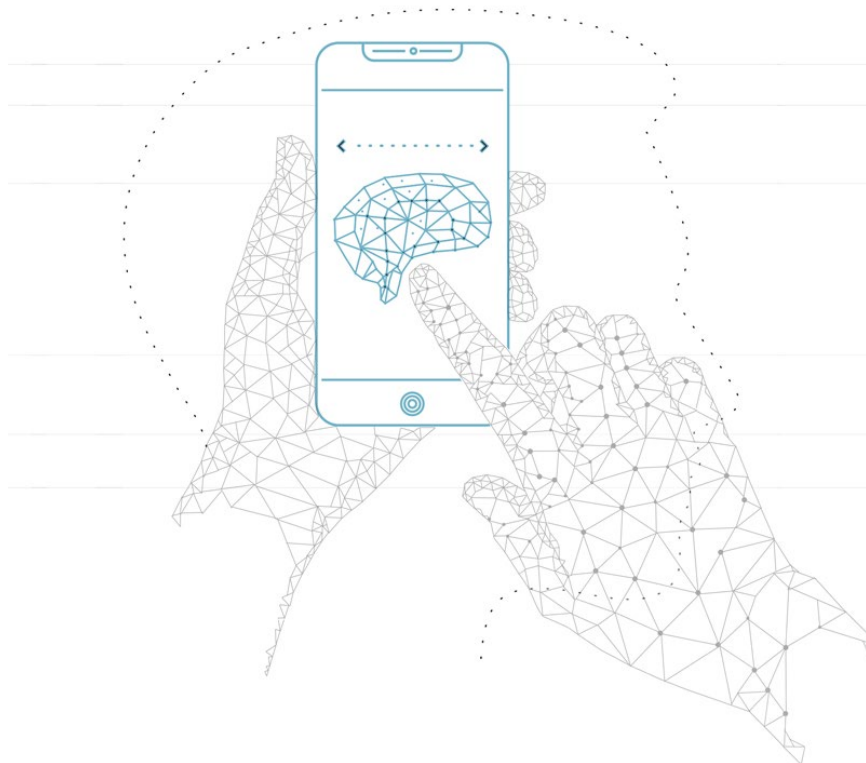




CRS Supplier Data Security

**General Data Protection Regulation (GDPR)
and
Protection of Personal Information Act (POPIA)**

26/08/2020



CRS Technologies (RF) (Pty) Ltd - 2000/009010/07

+27 11 259 4700 (t) • +27 11 259 4750 (f) • info@crs.co.za • crs.co.za

Centric House, Mellis Court, Mellis Road, Rivonia, 2128 • PO Box 2712, Rivonia, Gauteng, 2128

Director: M. Moodle



Overview

This document outlines what CRS does to prevent supplier access to data.

Supplier List

List of suppliers in relation to data at CRS Technologies:

| Supplier | Contact | Contact No. | Email | Address |
|-----------------------|--------------|-----------------|----------------------------|---|
| FCA Consulting | Dave Stewart | +27 11 663 0000 | Dave@Firstconsulting.co.za | Eastgate Lane Office Park, First Floor, Block D, 5 Iris Road, Bedfordview, South Africa, 2008 |
| | | | | |
| | | | | |
| | | | | |

Supplier Description

FCA Consulting:

Supplies CRS with the physical rack and hardware at Terraco location, South Africa. This is a CRS managed solution. FCA Consulting only provides the hardware. FCA also supplies services for the CRS internal network and user support.

Supplier Restrictions

This section outlines what the supplier has access to and how CRS protects client data from supplier access.

Information Security Policies

No access.



Organisation of Information Security

No access.

Human Resource Security

No access.

Asset Management

Limited to LAN and WAN hardware and Wi-Fi.

Access Control

Physical access to hardware, no access to database and client data.

Cryptography (Encryption)

No access.

Physical and Environmental Security

Limited access to supplier personnel. All have signed the supplier compliance requirements from CRS. Managed through change control.

Operations Security

No access.

Communications Security

No access.

System Acquisition, Development and Maintenance

Limited access, managed through change control.

Supplier Relationships

All suppliers have been through and accepted CRS supplier compliance.

Information Security Incident Management

No access.

Information Security Aspects of Business Continuity Management

No access.

Compliance

CRS conducts regular compliance audits on suppliers.



Document Review Outline (Admin Use Only)

| Author | Review Team | Date |
|----------------|--------------------|-------------|
| <i>Mat P</i> | Ian, Mat | Dec 2020 |
| <i>Nicol M</i> | Nicol | July 2021 |